

S-K2™ Step Bolt Adaptor INSTALLATION INSTRUCTIONS

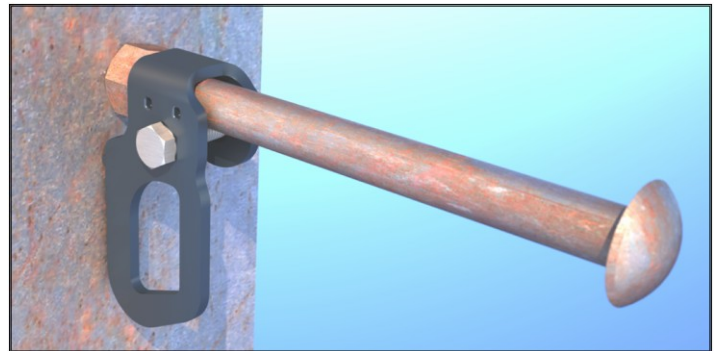
The Rapid Rail International **S-K2™** product is designed for use on structures equipped with step-bolts. Step bolts are not supplied but must be capable of supporting a correctly installed SK-2 product when it is subjected to a force of 5000lbf vertically downwards. Three models are available:

SK2-16 Part No. 101053 for attachment to 5/8" bolts

SK2-19 Part No. 101054 for attachment to 3/4" bolts

SK2-22 Part No. 101055 for attachment to 7/8" bolts

WARNING: All persons using or installing this equipment must understand all instructions. Failure to do so may result in serious injury or death. Users should be familiar with pertinent regulations governing this equipment. All individuals who use this product must be properly instructed on how to use this device.



Installation

- Before starting installation, establish that the structure and step bolts are capable of supporting the expected fall arrest forces and are in good condition. I.e. free of corrosion, distortion (bending) and securely fixed.
- Removal of the step-bolt is not required if it is in good condition, otherwise it should be replaced.
- Inspect the **S-K2™** for damage, cracks or corrosion before attachment to the step-bolt.

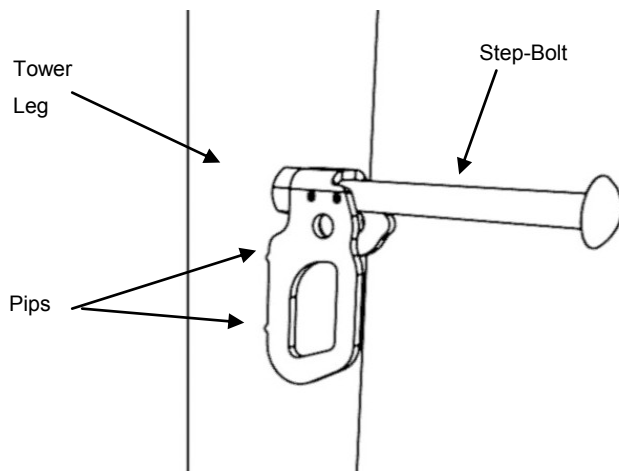


Fig 1

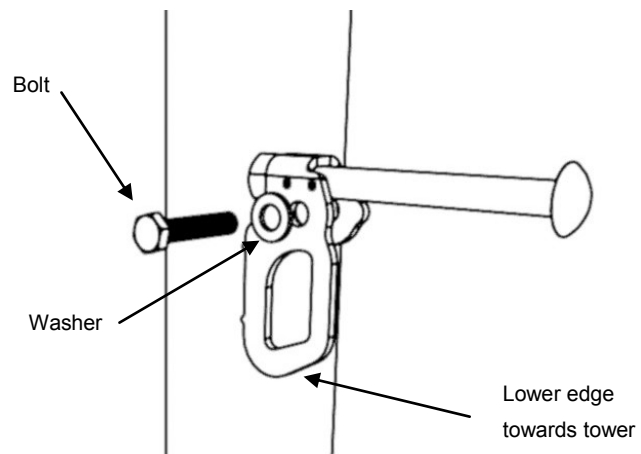


Fig 2

- Place the **S-K2™** over the step-bolt in the correct vertical orientation with the lower edge angled down towards the tower body and the pips against the tower leg as shown on Fig1. The **S-K2™** must be vertical as shown.
- Insert the supplied bolt and washer through the fixing hole in the **S-K2™** until it engages with the fixed nut and hand tighten. Use the supplied bolt and washer only, do not use any other bolts or washers. Fig 2.
- Ensure that the **S-K2™** is vertical and the pips are against the tower before using a suitable wrench to tighten the bolt sufficiently to prevent it rotating on the step bolt when hand pressure is applied. Torque to approximately 45 ft-lbs (61 Nm)
- Ensure that the **S-K2™** will not rotate or slide along the step bolt when hand pressure is applied.

Doc: D15002	Issue: 5	Issue Date: 04/2016
Page 1 of 2	Approved: A Warren	

Pre-Use Inspection

- Before use as a fall arrest anchor, visually inspect the **S-K2™** and step-bolt for corrosion or damage and that the **S-K2™** will not slide along or rotate on the step-bolt.
- Ensure the correct orientation of the **S-K2™** i.e. the snap-hook attachment point is vertically below the step-bolt.

Do not use any product that fails these inspections.

Warnings

- This product is intended for use by trained professional climbers only.
- A copy of these instructions should be provided to all users. Please contact Rapid Rail International Limited for additional copies.
- All instructions for this and any associated products must be read and understood before use.

Failure to comply with these instructions and warnings could result in serious injury or death.

- This product is for use as a fall arrest anchor only. It must not be used for any other purpose such as hoisting. Please consult Rapid Rail International Limited before use if you propose to use this product for any other purpose.
- If this product had been subjected to any impact forces, such as arresting a fall, it must be immediately removed from service.
- The **S-K2™** can be used to protect one person only. Multiple connections to a single **S-K2™** is not allowed.
- The **S-K2™** will support a force of 5000lbf (22,2kN) but OSHA requires that fall arrest forces are limited to 1800lbf (8kN). The user should ensure that the PFAS system used includes a force limiting feature e.g. tear webbing. Maximum free fall distance is 6'.
- Do not modify, change or repair this product in any way.
- This product should be used only with compatible snap-hooks or carabineers. They should meet applicable OSHA standards. Be aware of roll out issues with some snap-hooks and carabineers.
- Check that the snap-hook or carabineer is correctly attached to the **S-K2™** and that the gate is closed and engaged. Check visually.

Product Warranty, Limited Remedy and Limitation of Liability

Warranty: The following is made in lieu of all warranties or conditions, express or implied, including the implied warranties and conditions or merchantability or fitness for a particular purpose. The SK2 range of products offered by Rapid Rail International Limited is warranted against factory defects in workmanship and materials for a period of two years from the date of purchase or first use by the original owner.

Limited Remedy: Upon notice in writing, Rapid Rail International Limited will repair or replace all defective items at Rapid Rail International's sole discretion. Rapid Rail International Limited reserves the right to require that the defective item be returned to its plant for inspection before determining the appropriate course of action. Warranty does not cover equipment damage resulting from wear, abuse, damage in transit, or any damage beyond the control of Rapid Rail International Limited. Rapid Rail International Limited is the sole judge of product condition and warranty options. This warranty applies only to the original purchaser and is the only warranty applicable to the product. Please contact Rapid Rail International for assistance.

Limitation of liability: In no event will Rapid Rail International Limited be liable for any indirect, incidental, special or consequential damages including, but not limited to loss of profits, in any way related to these products regardless of the legal theory asserted.

Rapid Rail International Limited, Cwmbran, NP44 8SN, UK

Tel: 00144 1633 870676 www.RRiSafety.com

Doc: D15002	Issue: 5	Issue Date: 04/2016
Page 2 of 2	Approved: A Warren	